

STINGRAY 500-01 MANNED SUBMERSIBLE

The Stingray

TECHNICAL SPECIFICATIONS

General

Type	<i>Dry, One Atmosphere</i>
Occupants	<i>3 – Pilot plus 2</i>
Certification	<i>DNV-GL</i>
Operational Depth	<i>500 FSW (150 MSW)</i>
Dry Weight	<i>8,200 lbs (3719 Kgs)</i>
Payload	<i>820 lbs (371 Kgs)</i>
Dimensions (LxWxH)	<i>204” x 102” x 88” (5.1m x 2.5m x 2.2m)</i>

Life Support

Oxygen System	<i>Continuous flow</i>
Mission Time	<i>8 – 12 Hrs</i>
Reserve Time	<i>96 Hrs</i>
Emergency	<i>3 EBD's</i>
CO2 Removal	<i>CO2 Scrubber</i>
Monitoring	<i>Dual Monitors - O2 & CO2</i>

Propulsion

Thrusters	<i>DC Electric, brushless</i>
Horizontal	<i>2 x 10 hp Vectored</i>
Vertical	<i>1 x 10 hp</i>
Speed	<i>Up to 3 knots</i>

Navigation, Communication, Equipment

Underwater Comm's	<i>Acoustic Phone</i>
Surface Comm's	<i>VHF</i>
Obstacle Avoidance	<i>Scanning Sonar</i>
Navigation	<i>Digital and Magnetic Compass</i> <i>Heading, Pitch and Roll</i>
Tracking	<i>USB L</i>
Lights	<i>5 x 4300 Lumen LED</i>

Power

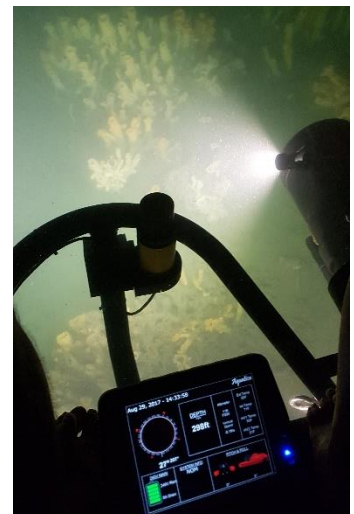
Source	<i>Deep Cycle AGM</i>
Capacity	<i>30 kWh</i>
Propulsion	<i>240 VDC</i>
House System	<i>24 VDC</i>
Emergency Battery	<i>24 VDC</i>

Comfort

Temp & Humidity	<i>Cooling System with circulating fans</i>
Operational	<i>Portable Controller</i>
Convenience	<i>USB plugs in cabin</i>

Safety

Monitoring	<i>Int/Ext Temperature & Pressure</i>	<i>Water Leak</i>
	<i>Electrical Systems</i>	<i>Hydrogen Leak</i>
	<i>Battery Status</i>	<i>General System Status</i>
	<i>Depth</i>	<i>Thruster Status</i>
Equipment	<i>RF Beacon w/Xenon Strobe</i>	<i>Emergency Release Buoy</i>
	<i>Emergency Drop Weight</i>	<i>Fire Extinguisher</i>
	<i>CTD Profiler</i>	



For various Charter Services, the Stingray comes with full crew and surface support tender. Larger ships and barges can also be arranged, if required. For additional equipment, the Stingray is equipped with several bulkhead penetrator ports in which additional equipment can be added. Contact Aquatica for details and pricing.

SCIENTIFIC – OBSERVATION – RECREATION – MEDIA – TOURISM – COMMERCIAL

DNV-GL
Jul 1, 2017

Aquatica
SUBMARINES INC.

#418, 1489 MARINE DRIVE, WEST VANCOUVER, B.C., CANADA, V7T 1B8
MAIN: +1.587.333.6062 EMAIL: INFO@AQUATICASUBMARINES.COM