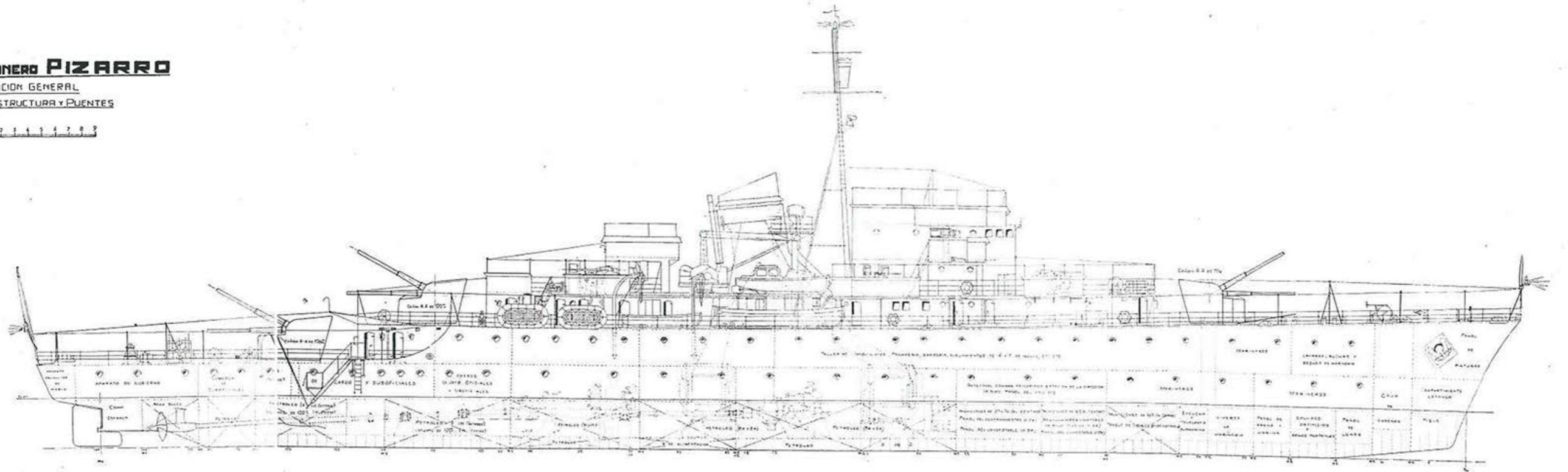


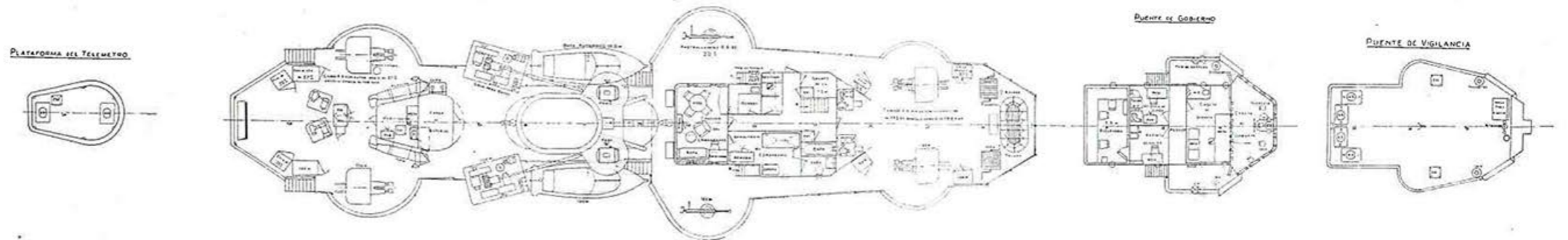
CANONERO PIZARRO

DISPOSICION GENERAL
SUPERESTRUCTURA Y PUENTES

Escala



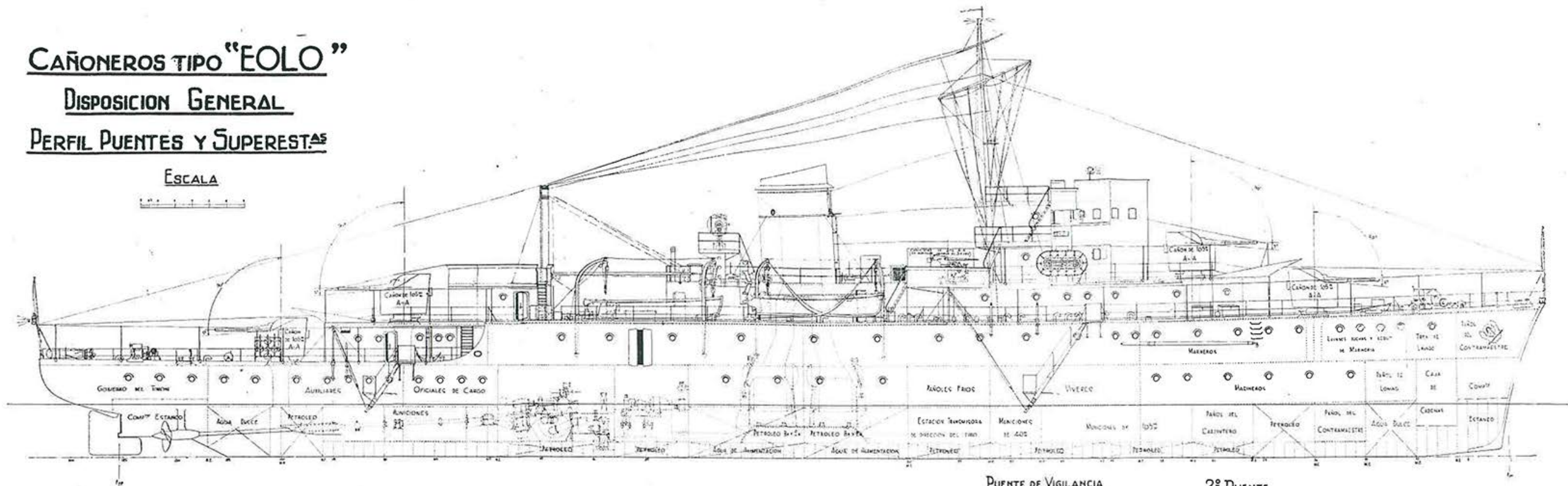
SUPERESTRUCTURA Y PUENTE BAJO



CAÑONEROS TIPO "EOLo"

DISPOSICION GENERAL

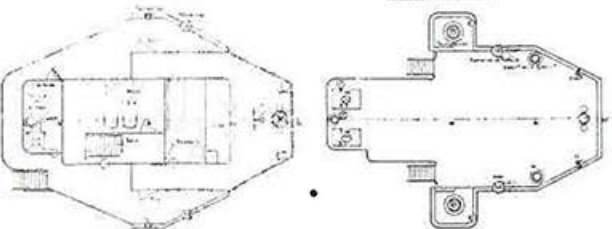
PERFIL PUENTES Y SUPERESTAS



PUENTE DE VIGILANCIA

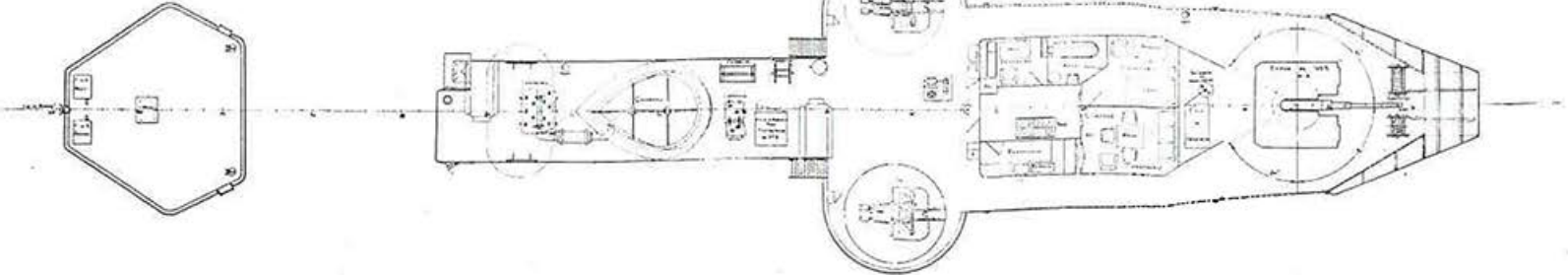
2º PUENTE

PLATAFORMA DE PROYECT



SUPERESTRUCTURA DE POPA

TECHO DE LA SUPERESTRUCTURA

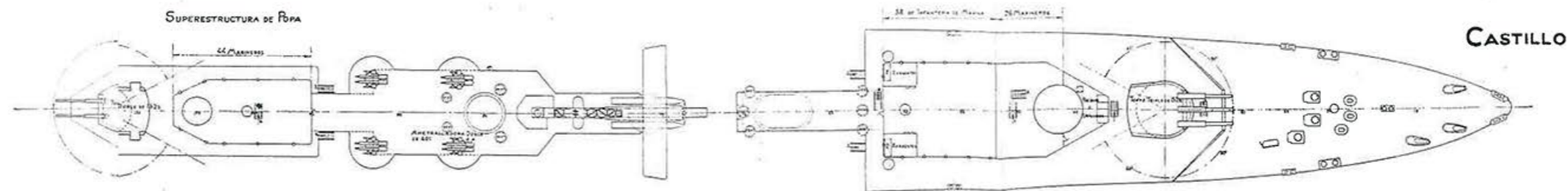
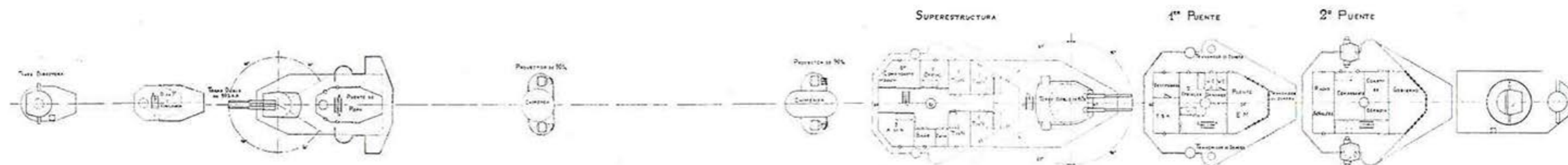
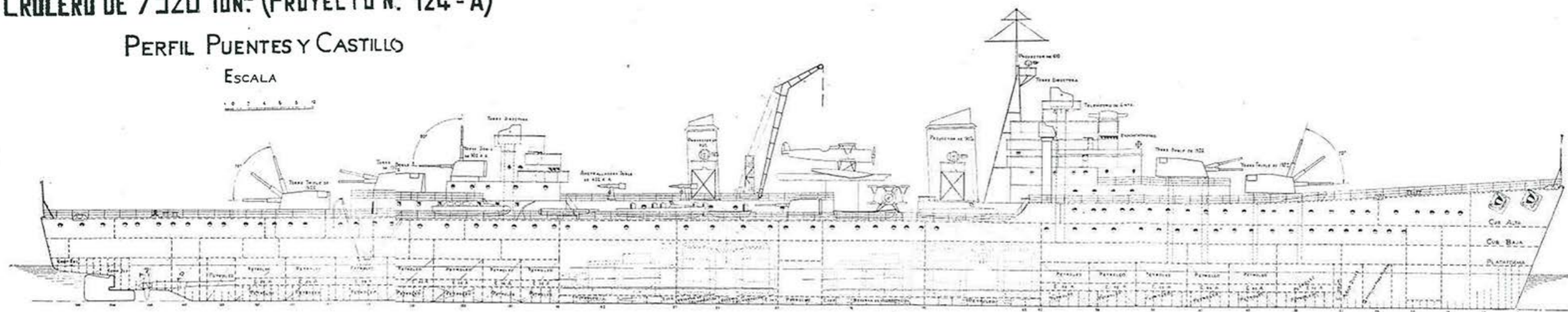


CRUCERO DE 7920 TON.^s (PROYECTO N.º 124 - A)

PERFIL PUENTES Y CASTILLO

ESCALA

1 0 2 4 6 8 2



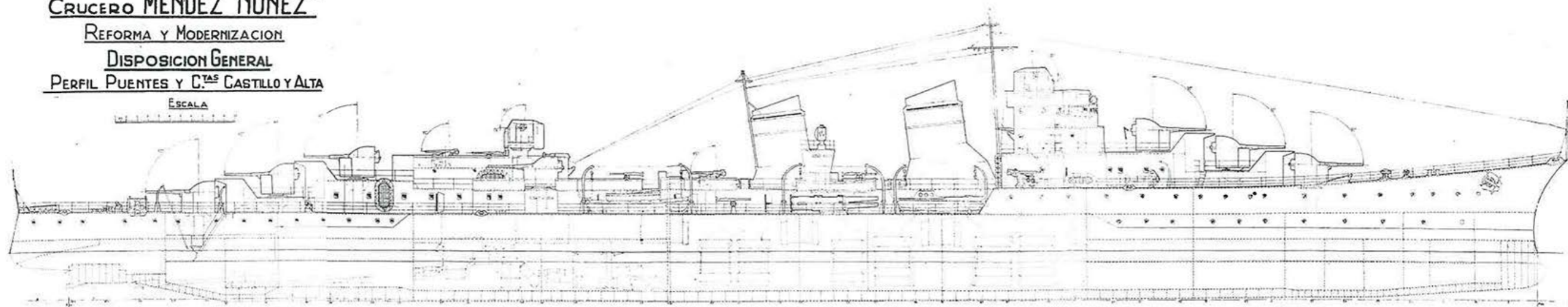
CRUCERO "MENDEZ NUÑEZ"

REFORMA Y MODERNIZACION

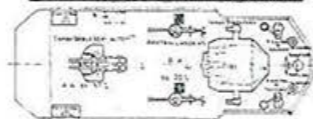
DISPOSICION GENERAL

PERFIL PUENTES Y C.^{tas} CASTILLO Y ALTA

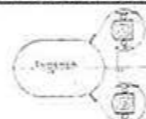
ESCALA



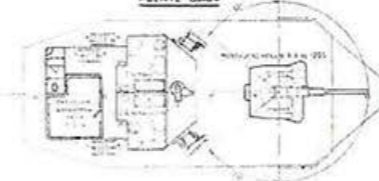
PUENTE DE VIGILANCIA Y GOBIERNO AUXILIAR



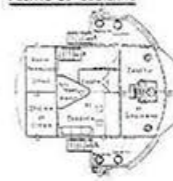
PLATAFORMA DE PROYECTORES DE 90 CM.



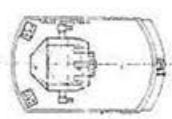
PUENTE BAJO



PUENTE DE GOBIERNO



PUENTE DE VIGILANCIA



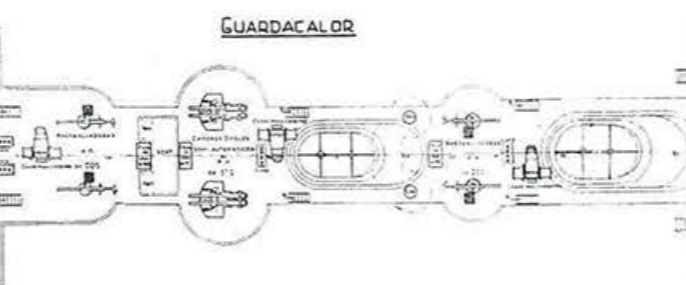
DIMENSIONES PRINCIPALES

ESLORA TOTAL	141,06
ESLORA EN LA FLOTACION	133,59
ESLOR. ENTRE PERPENDICULARES	134,11
MANSA DE TOZADO	13,856
PUNTA DE TOZADO	7,77
DESPLAZAMIENTO STANDARD	4650 TONS.
CALADO CORRESPONDIENTE	4,40 M.

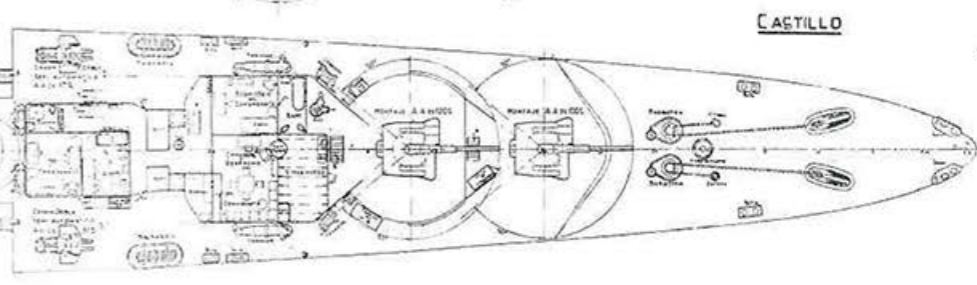
SUPERESTRUCTURA DE POPA



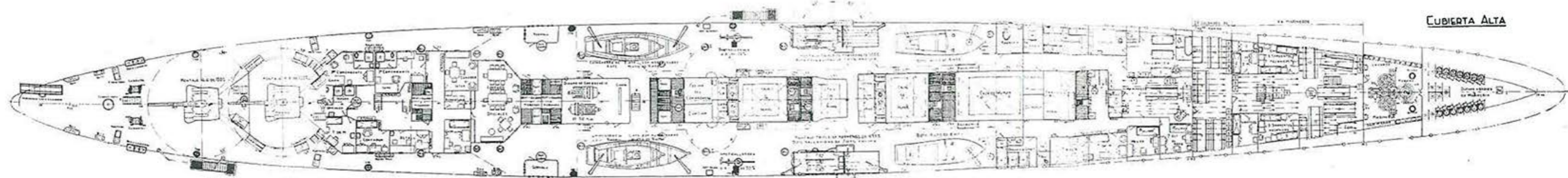
GUARDACALOR



CASTILLO



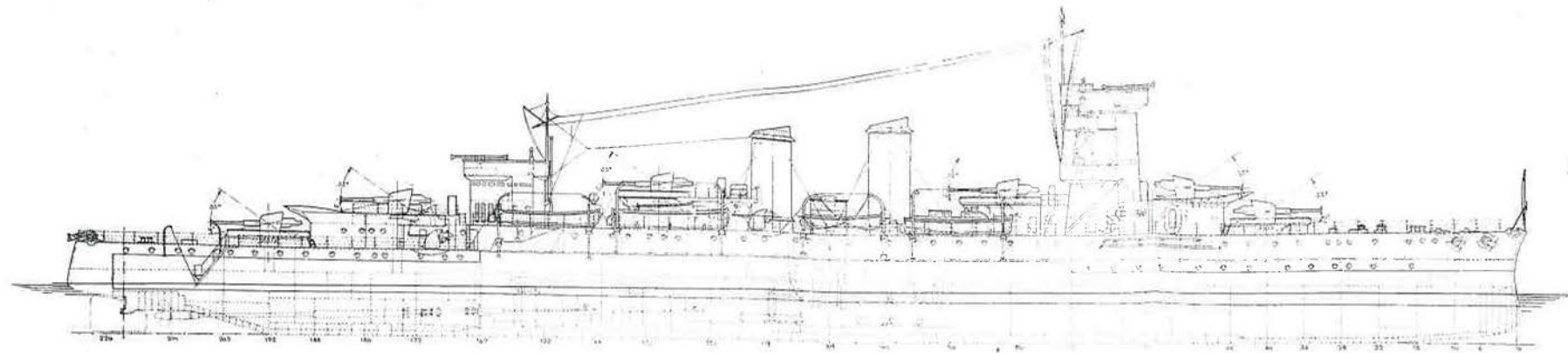
CUBIERTA ALTA



CRUCERO "NAVARRA"

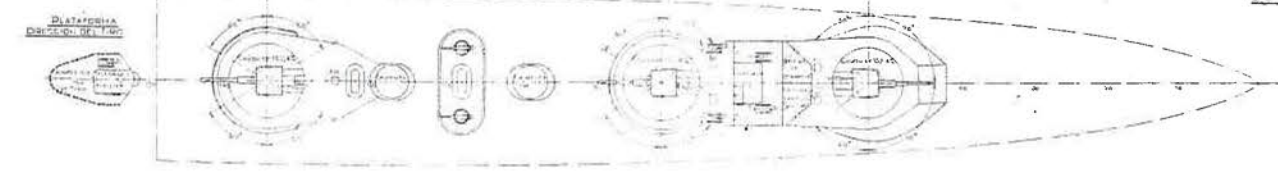
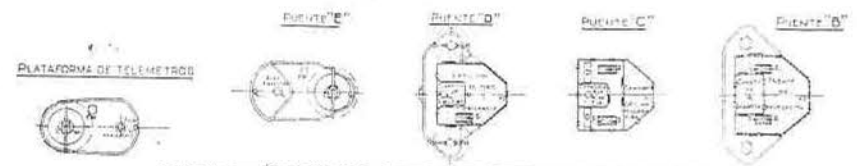
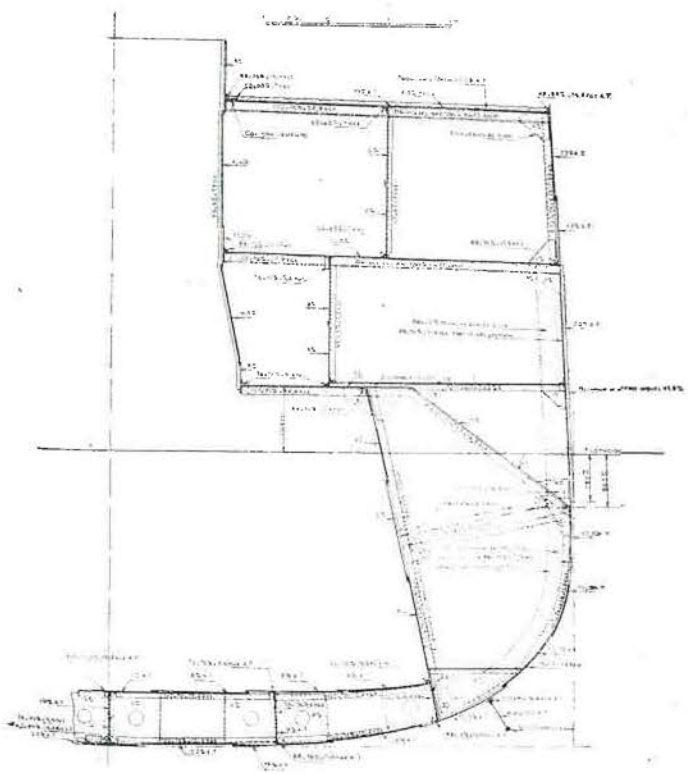
DISPOSICION GENERAL

Escala

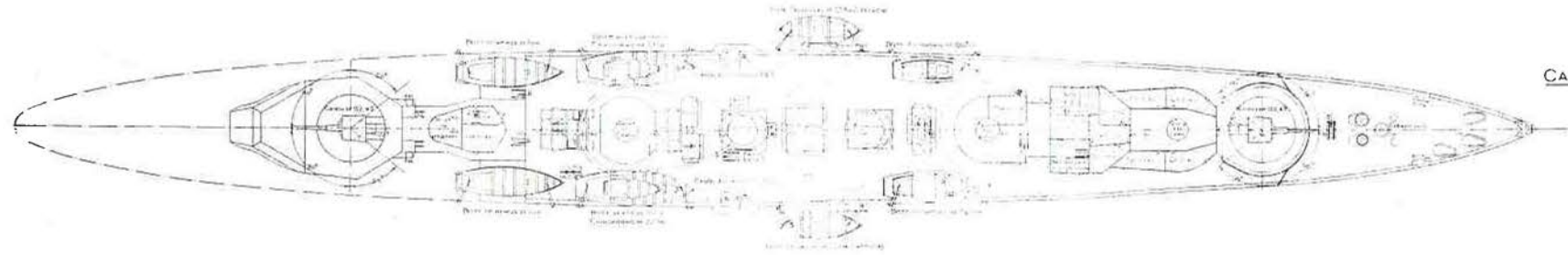


PERFIL

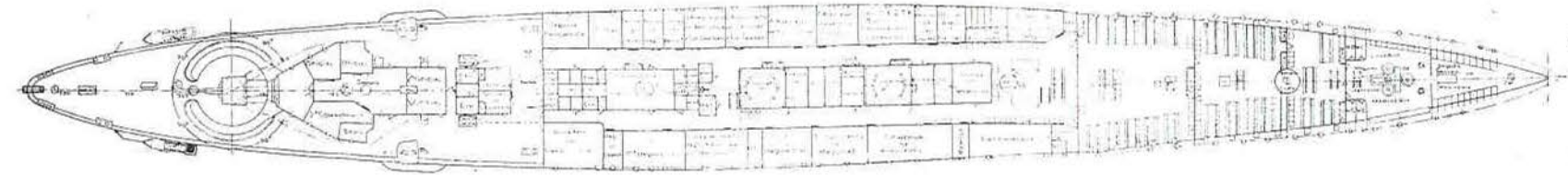
SECCION POR LA CUAR MAESTRA



SUPERESTRUCTURA DE PROA Y PUENTES



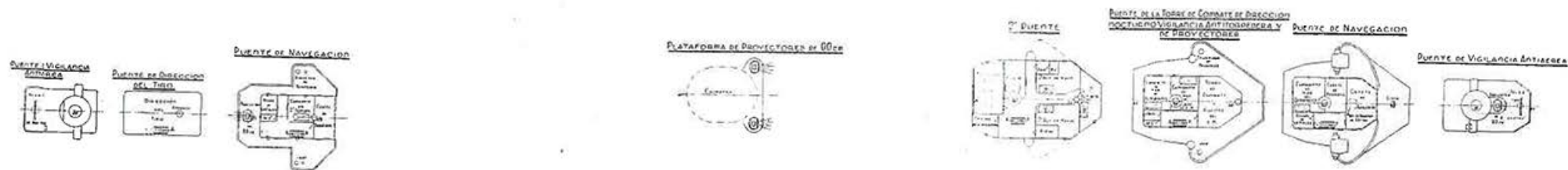
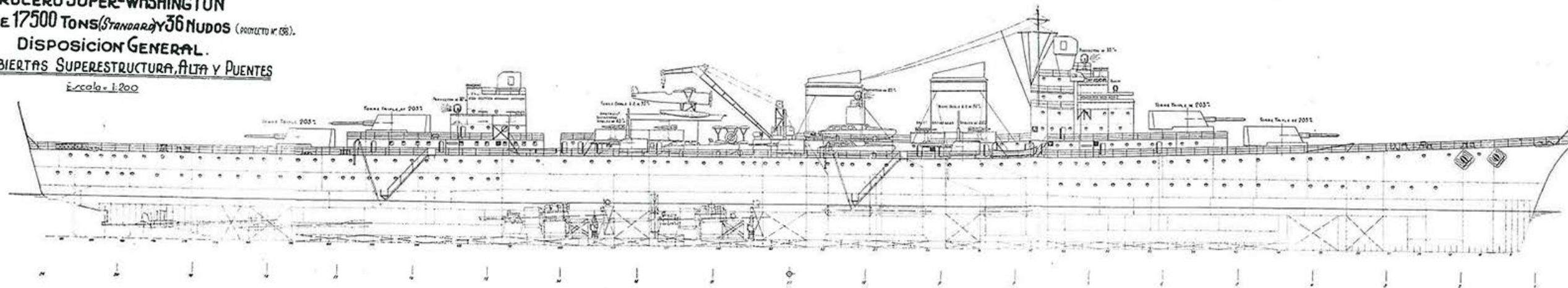
CASTILLO



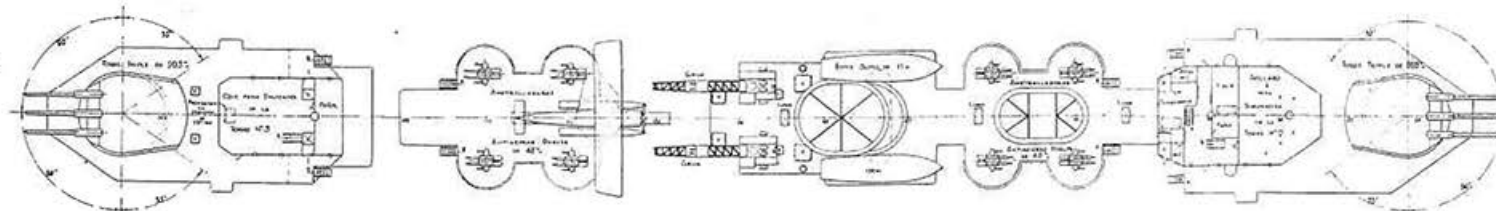
CUB. ALTA

CRUCERO SUPER-WASHINGTON
 DE 17500 TONS (STANDARD) Y 36 NUDOS (PROYECTO N.º 38).
DISPOSICION GENERAL.
PERFIL, CUBIERTAS SUPERESTRUCTURA ALTA Y PUENTES

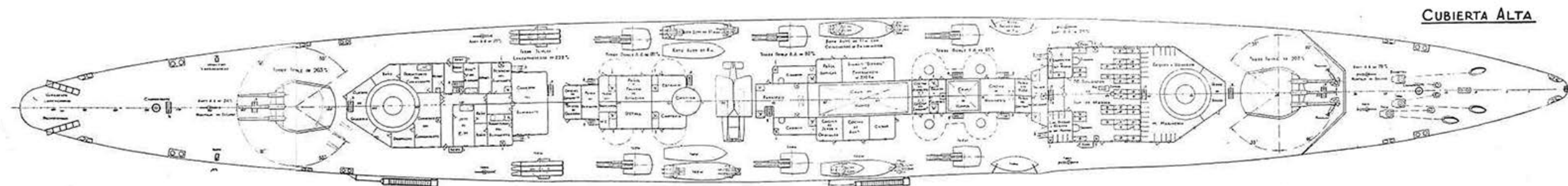
Escala = 1:200



SUPERESTRUCTURA DE PIPA



SUPERESTRUCTURA DE PROA

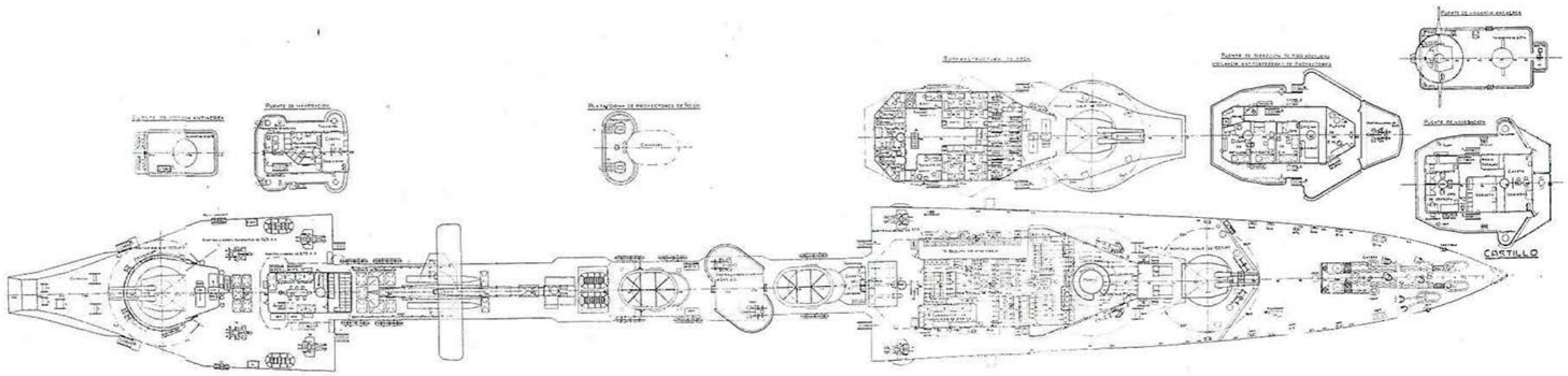
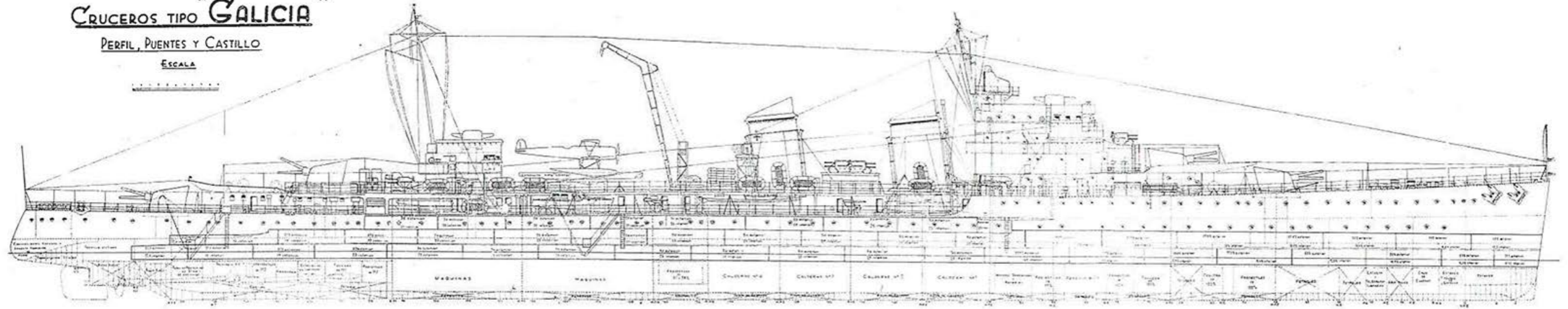


CUBIERTA ALTA

CRUCEROS TIPO "GALICIA"

PERFIL, PUENTES Y CASTILLO

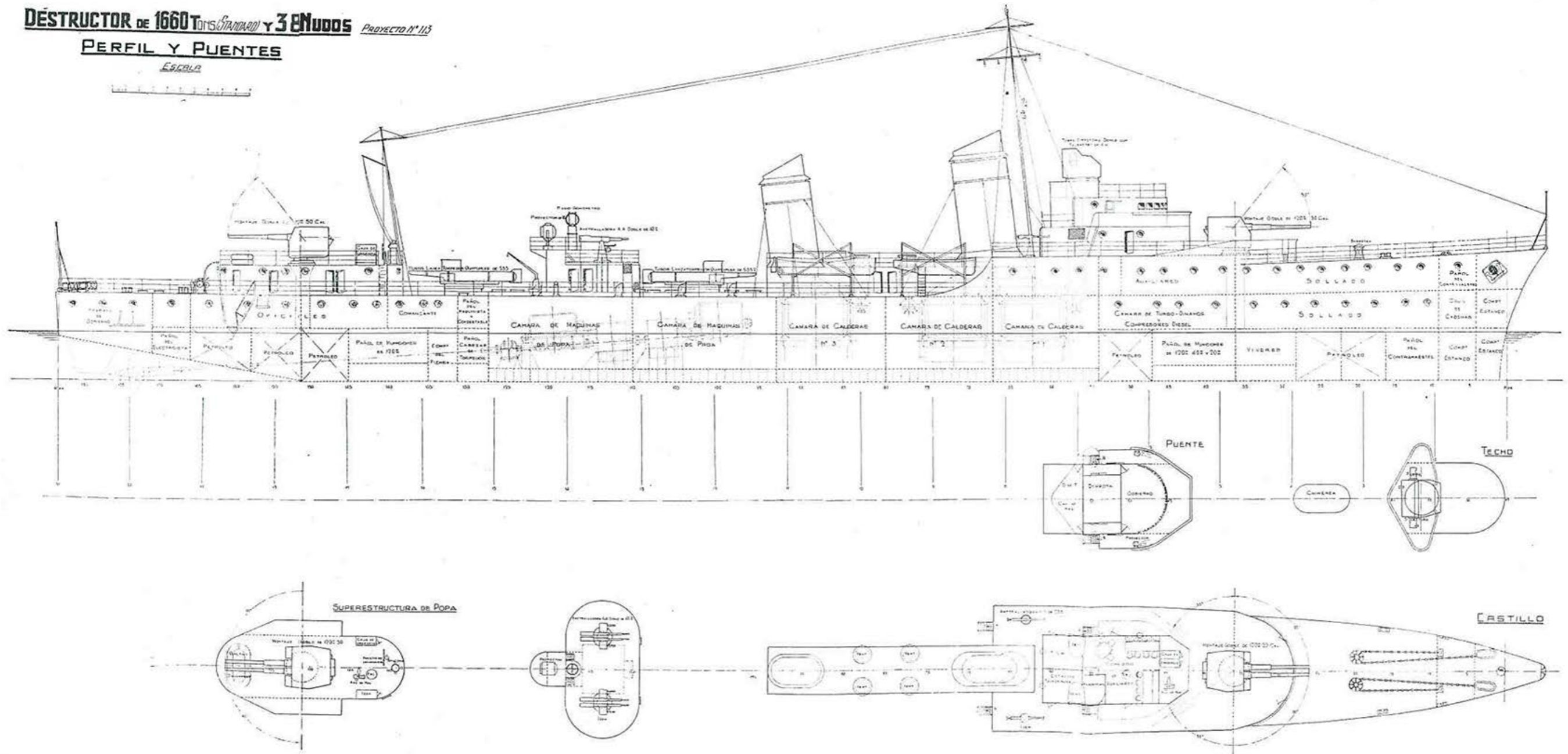
ESCALA



DÉSTRUCTOR DE 1660 TONS STANDARD Y 3 ENUDO PROYECTO N° 113

PERFIL Y PUENTES

ESCALA

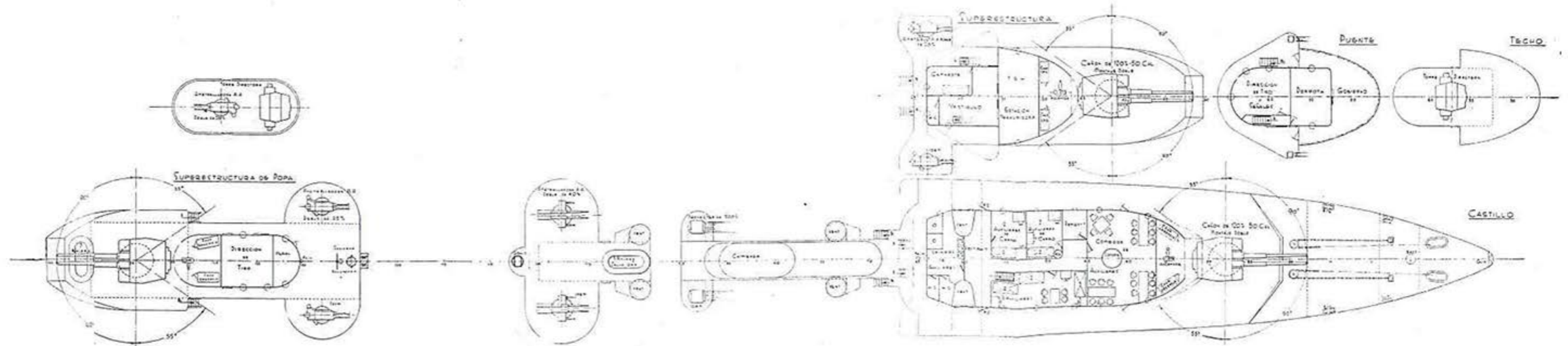
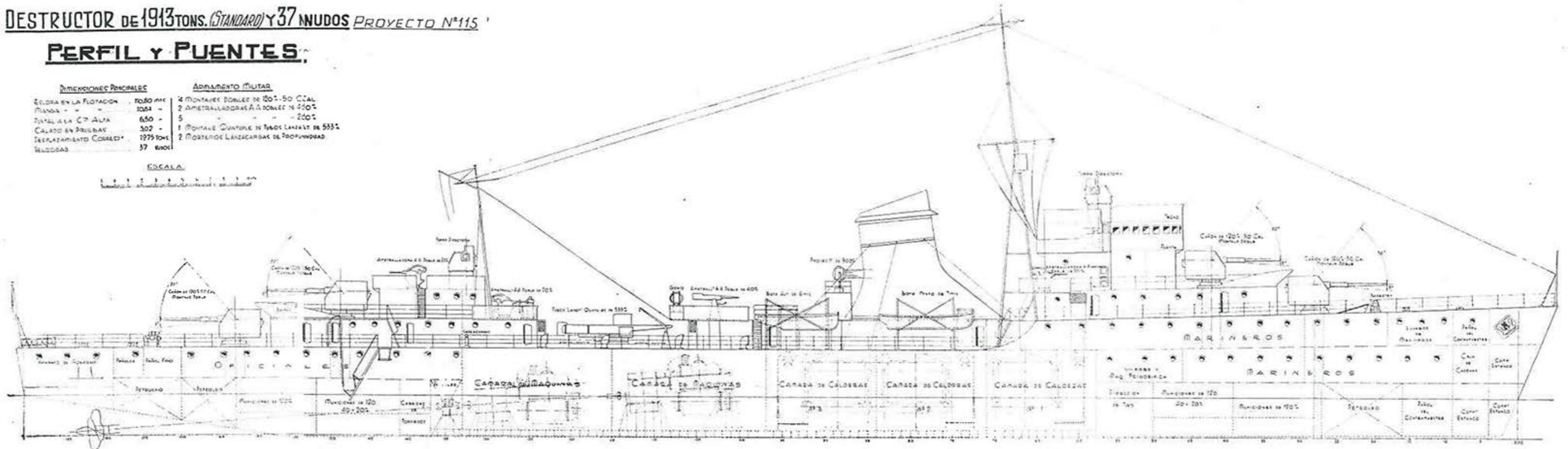


DESTRUCTOR DE 1913 TONS. (STANDARD) Y 37 MUJOS PROYECTO N° 115

PERFIL Y PUENTES

DIMENSIONES PRINCIPALES		ARMAMENTO MILITAR	
ESTRADA EN LA FLOTACION	10,80 MTS	4 MONTAJES DOBLES DE 120-50 CCAL	
MANDELA	3,084	2 AMETALLADORAS A 2 DOBLES DE 400°	
PUNTA A LA C° ALTA	6,50	5 " " " " " " " " " " " "	
CALADO EN PRUBAS	3,02	1 MONTAJE QUINQUE DE TACOS LAMINAR DE 533°	
DESPLAZAMIENTO CORRECTO	1979 TONS	2 MONTAJES LANZACANAS DE PROFUNDIDAD	
VELOCIDAD	37 KNOTS		

ESCALA

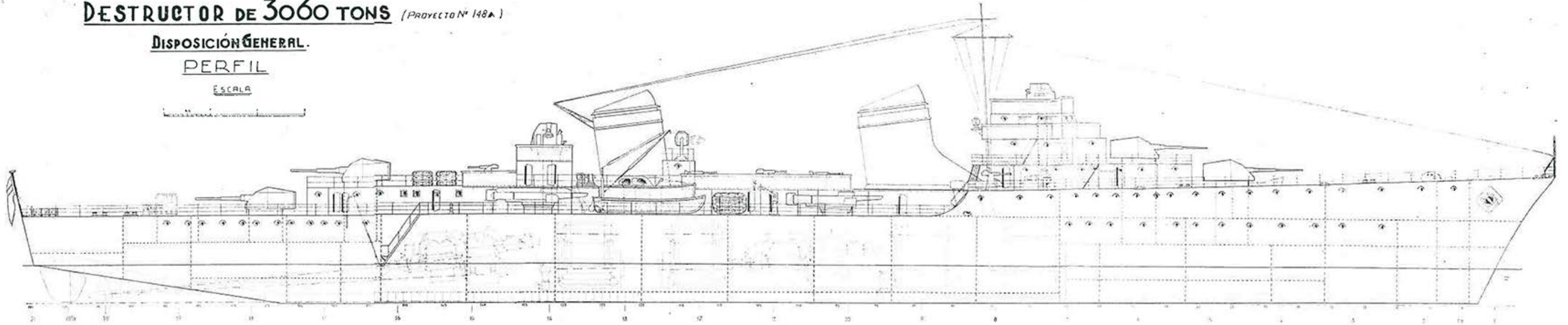


DESTRUCTOR DE 3060 TONS (PROYECTO N° 148A)

DISPOSICIÓN GENERAL.

PERFIL

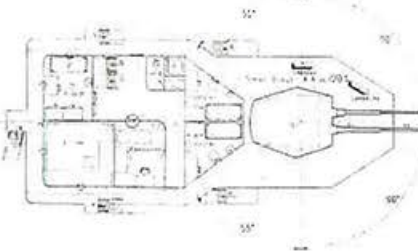
ESCALA



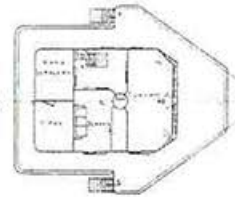
PUENTE DE VIGILANCIA "AA"



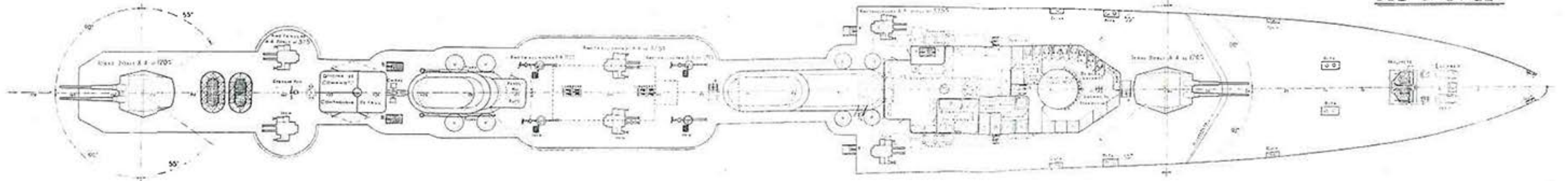
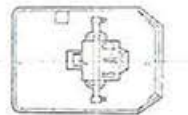
SUPERESTRUCTURA



PUENTE DE NAVEGACION



PUENTE DE VIGILANCIA



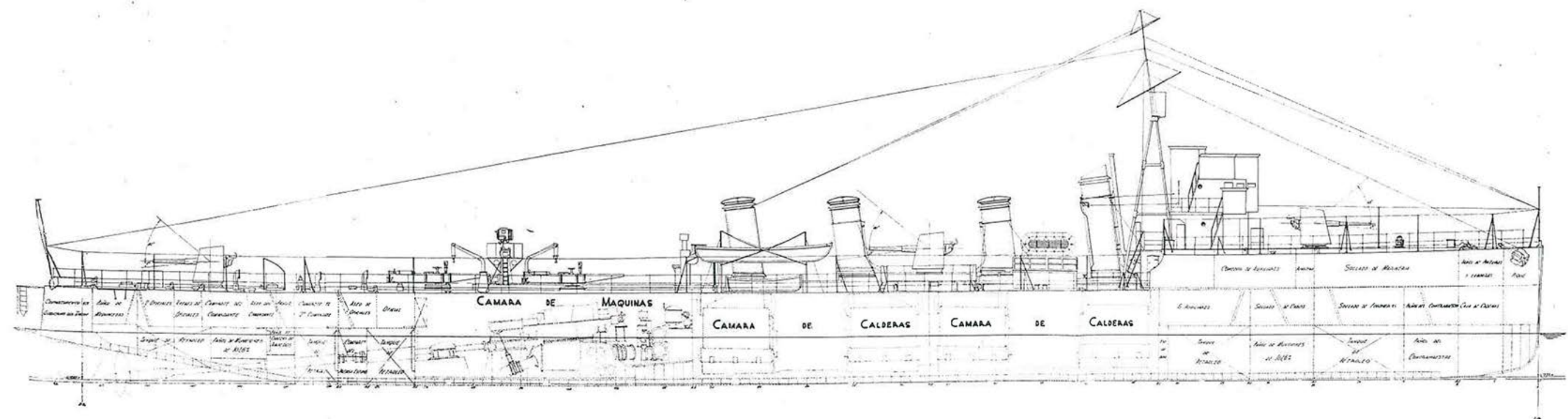
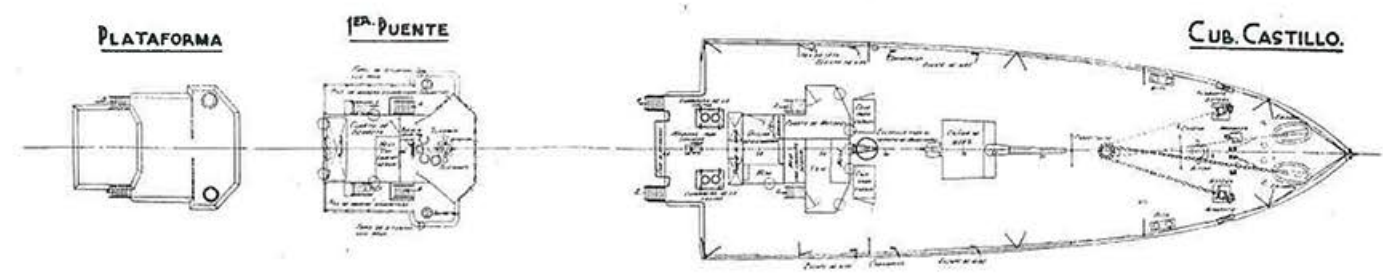
CUB CASTILLO

DESTRUCTOR "ALSEDO"

DISPOSICION GENERAL.

PERFIL, CASTILLO Y PUENTES.

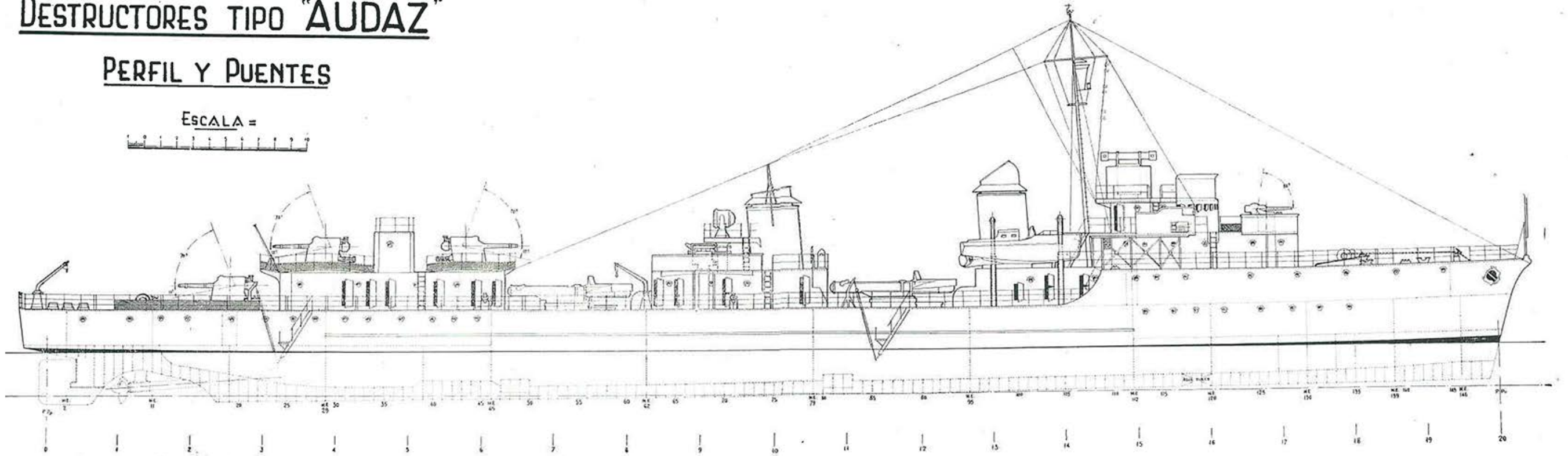
ESCALA:



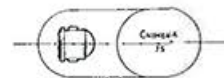
DESTRUCTORES TIPO "AUDAZ"

PERFIL Y PUENTES

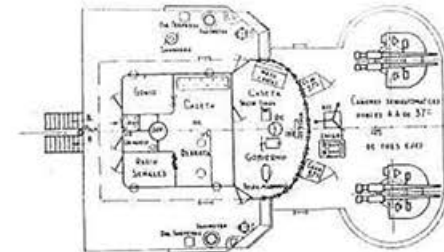
ESCALA =



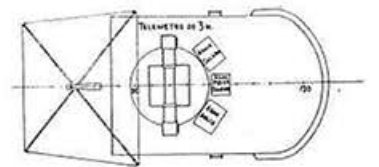
PLATAFORMA DEL PROYECTOR DE 90°



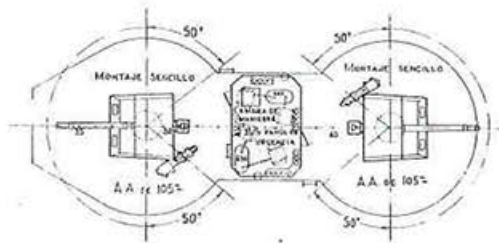
PUENTE DE NAVEGACION



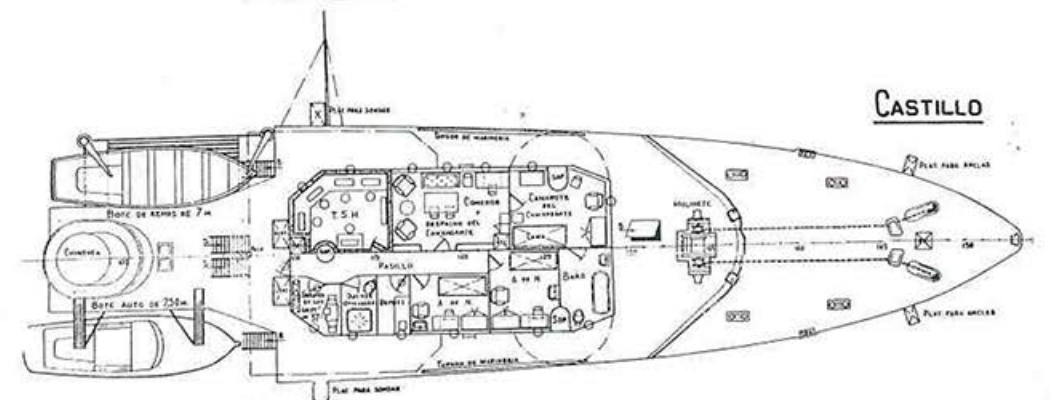
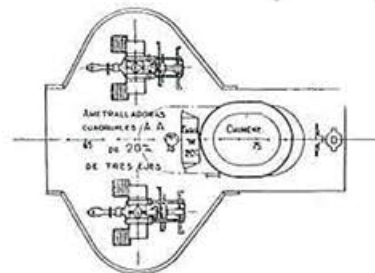
TECHO DEL PUENTE



SUPERESTRUCTURA DE POPA



PLATAFORMA DE AMETALLADORAS

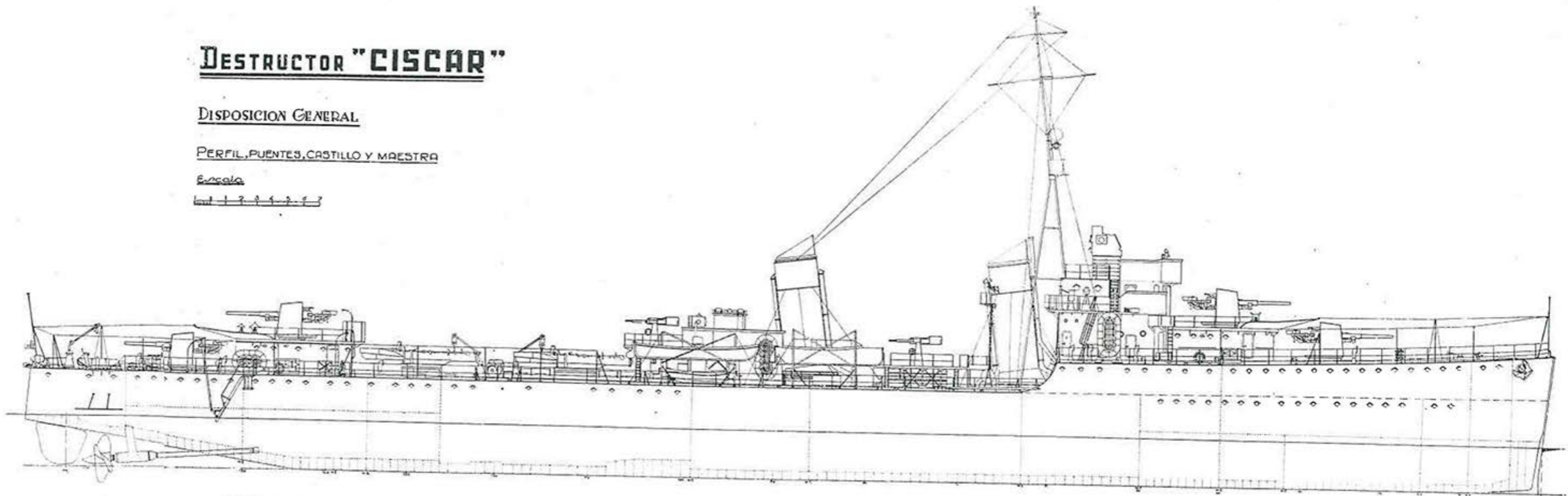


DESTRUCTOR "CISCAR"

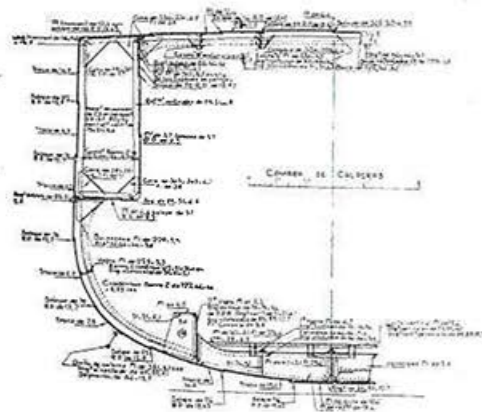
DISPOSICION GENERAL

PERFIL, PUENTES, CASTILLO Y MAESTRA

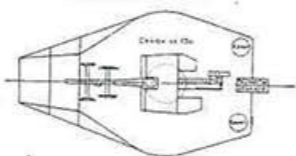
Escala



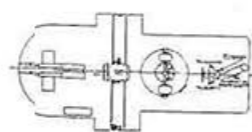
SECCION POR LA CAMARA DE CALDERAS



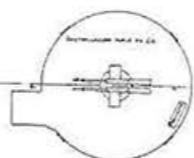
PLATAFORMA DE POPA



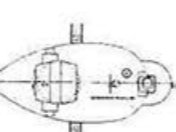
TRINQUE CON CAÑON 40, TELÉMETRO Y PROYECTOR



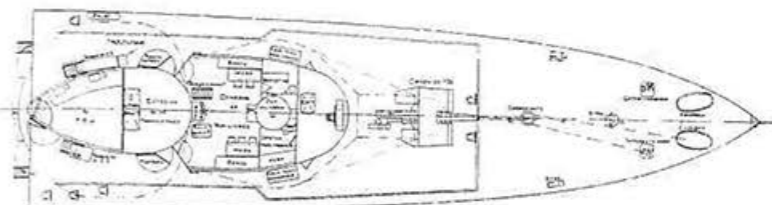
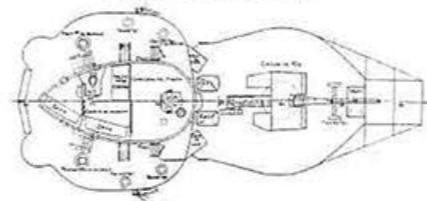
PUENTES CENTRALES



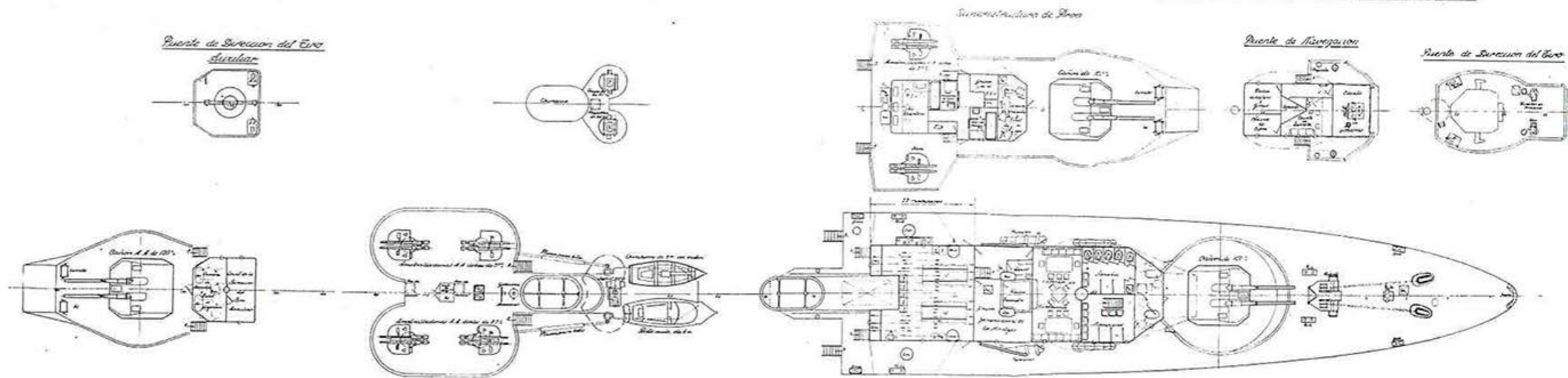
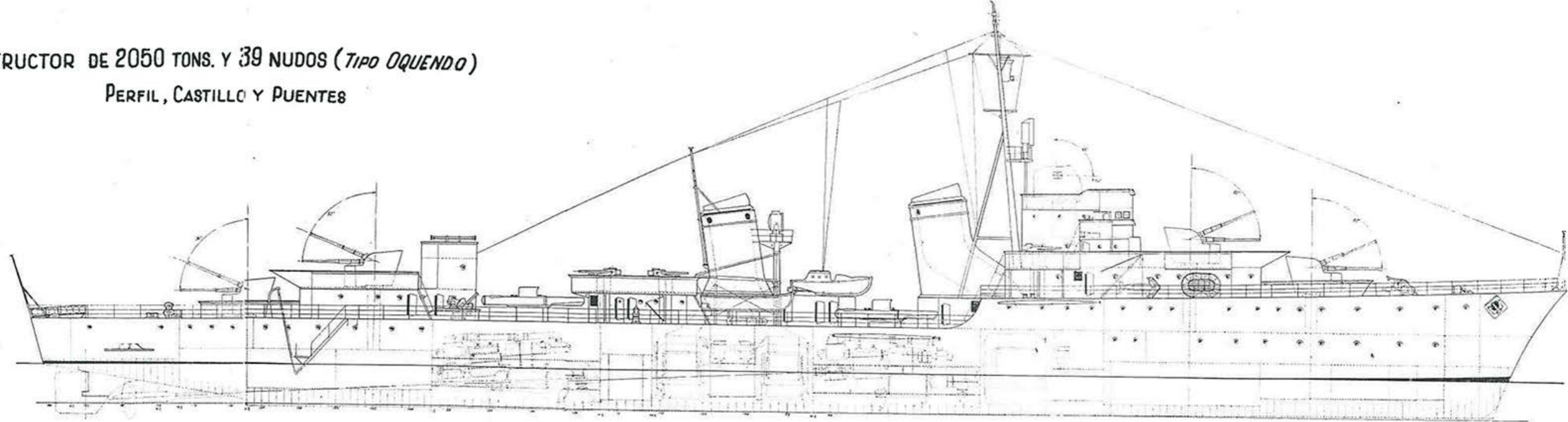
PUENTE BATA



PLATAFORMA DE CAÑON 102



DESTRUCTOR DE 2050 TONS. Y 39 NUDOS (TIPO OQUENDO)
PERFIL, CASTILLO Y PUENTES



DRAGAMINAS TIPO "TAMBRE"

DISPOSICION GENERAL

PERFIL

